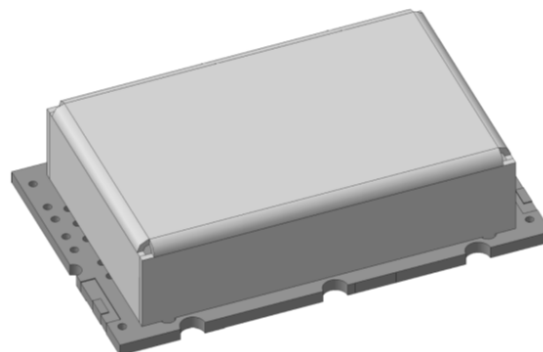


General Description

MCS-C5-1300-293-SMT is a radio frequency microstrip bandpass filter, designed for a wide range of RF / Microwave applications. It contains a low insertion loss and high out of band suppression.



Key Features

- Low insertion loss
- High out of band suppression
- Low cost

Specification (at 25°C)

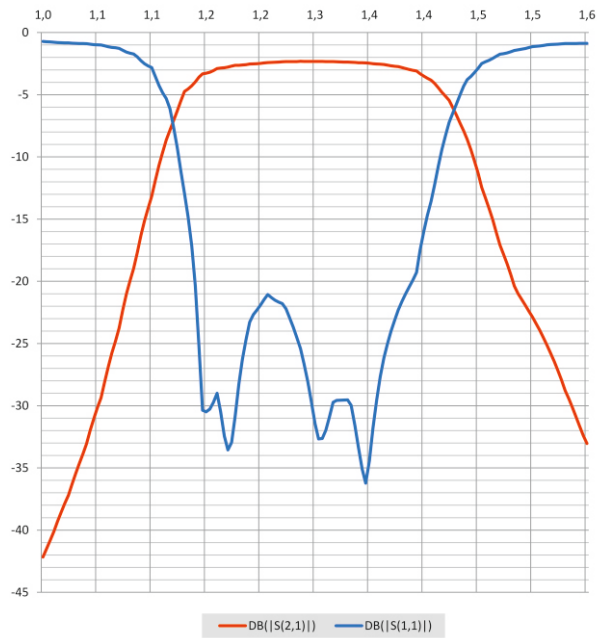
Parameter	Sym.	Min.	Typ.	Max.	Unit
Center frequency*	f_c		1300		MHz
Bandwidth @ -3 dB*	Δf		22 293		% MHz
Bandwidth @ -40 dB*	Δf_r		660		MHz
Insertion loss			3		dB
VSWR				1.5:1	
Power input	P			2	W
Wave impedance	Z		50Ω		
*- parameter can be changed according to customer requirements					

Temperature range

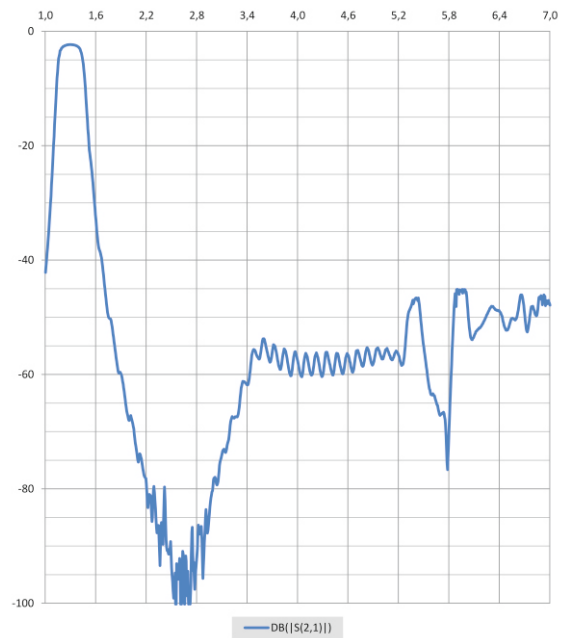
Parameter	Min.	Max.	Unit
Operation Temperature	-65	+85	°C
Storage Temperature	-70	+105	°C

S – Parameters

In-Band Response (1.0 – 1.6 GHz)



Out-Band Response (1 – 7 GHz)



Physical dimensions

