

General Description

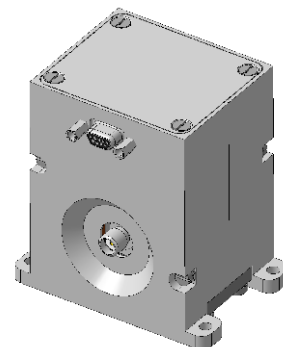
MCS-TMSW-1214-SMA/SMA is bandpass tunable filter L-band with integrated power supply and temperature compensation system. Designed for use in the transceiver modules, communication systems and radar.

Key Features

- High temperature stability
- High level of suppression
- High speed adjustment
- USB / SPI control

Application

- L-Band transceivers
- Mobile communication systems
- Radars



Specification (at 25°C)

Parameter	Sym.	Min.	Typ.	Max.	Unit
Central frequency*	F _c	1150		1450	MHz
Bandwidth	ΔF		12		MHz
Bandwidth @-3 dB**	f _{-3dB}	1.4 20	1.6 21	1.8 23	% MHz
Output VSWR	S ₁₁		2:1	3:1	
Input VSWR	S ₂₂		1.7:1	2:1	
Bandwidth @-1 dB*	f _{-1dB}		12		MHz
Bandwidth insertion loss	S ₂₁		9.5	10.5	dB
Squareness ratio @ -40 dB			3.8	4.1	
Supply voltage	V _{cc}	+4**	-4 / +8***	-12 / +12***	V
Supply current	I			0.4	A
Central frequency tuning time	t			150 80 50	μs
Operating temperature range		-65		+80	°C
Wave impedance input/output	Z		50?		
The deviation of the central frequency -65 °C@+25 °C			±0.015 ±0.2		% MHz
The deviation of the central frequency +80 °C@+25 °C			±0.015 ±0.2		% MHz

* - parameter can be changed according to customer requirements

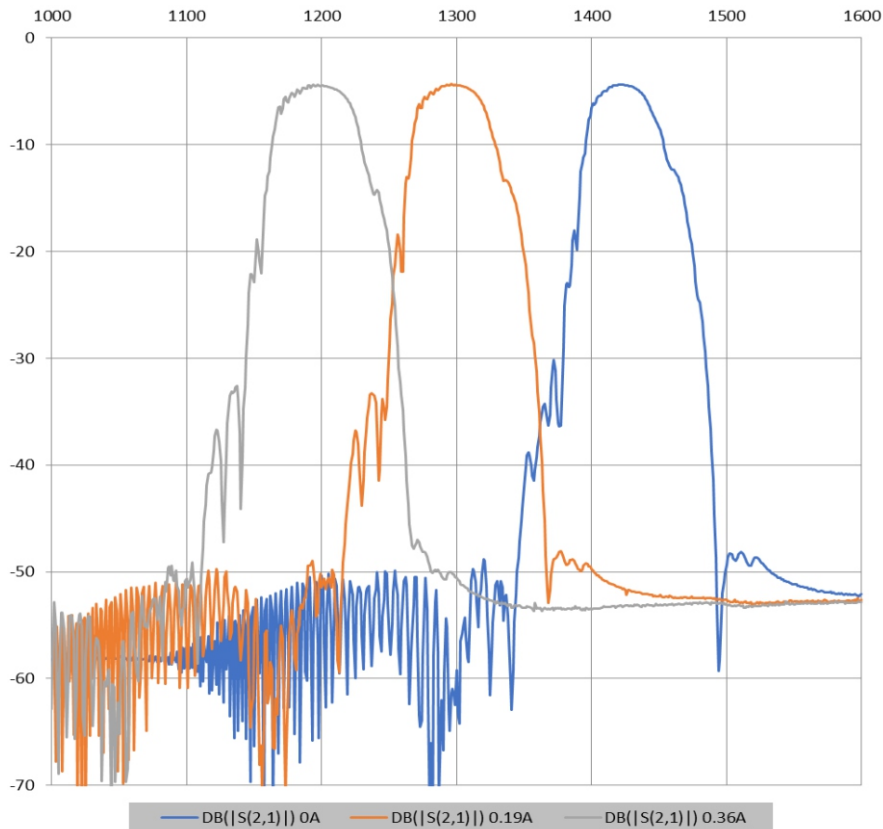
** - standard mode / *** - acceleration mode

Absolute maximum parameters

Parameter	Sym.	Value	Unit
Input power	P_{in}	0.2	W

S – Parameters

In-Band Response (1000 – 1600 MHz)



Physical dimensions

