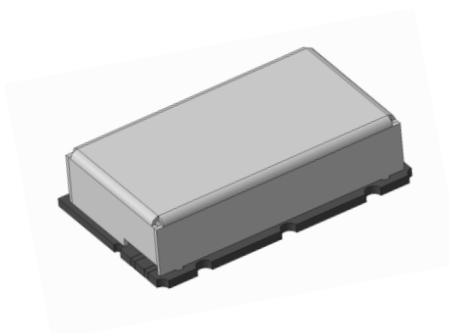


General Description

MCS-C4-1300-260-SMT is a radio frequency bandpass filter, designed for a wide range of RF / Microwave applications. It contains a low insertion loss, small size and high out of band suppression.



Key Features

- Low insertion loss
- High out of band suppression
- Low cost
- Small size

Specification (at 25°C)

Parameter	Sym.	Min.	Typ.	Max.	Unit
Center frequency*	f_c		1300		MHz
Bandwidth @ -3 dB*	Δf		20 260		% MHz
Bandwidth @ -30 dB*	Δf_r		520		MHz
Insertion loss			1.8		dB
VSWR				1.5:1	
Power input	P			2	W
Wave impedance	Z		50		Ω
*- parameter can be changed according to customer requirements					

Temperature range

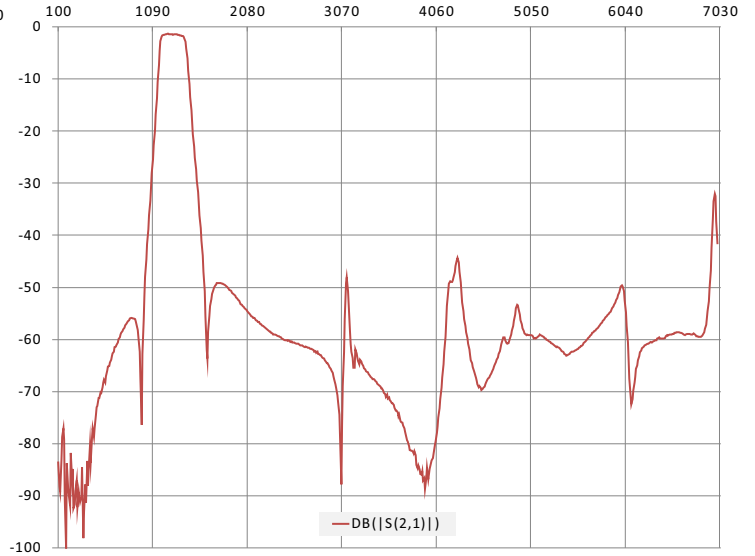
Parameter	Min.	Max.	Unit
Operation Temperature	-40	+85	°C
Storage Temperature	-65	+105	°C

S – Parameters

In-Band Response (90 – 1700 MHz)



Out-Band Response (10 – 7030 MHz)



Physical dimensions

