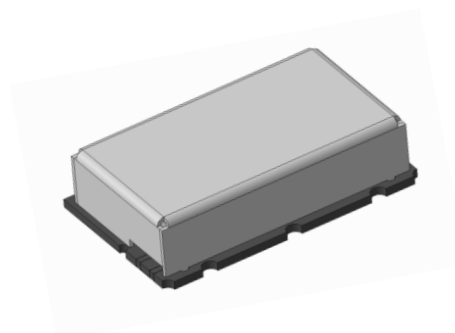


### General Description

MCS-C4-1600-65-SMT is a radio frequency bandpass filter, designed for a wide range of RF / Microwave applications. It contains small size, a narrow band and high suppression in band  $\pm 100$  MHz



### Key Features

- Narrow band
- Wide band of suppression
- Low cost
- Small size

### Specification (at 25°C)

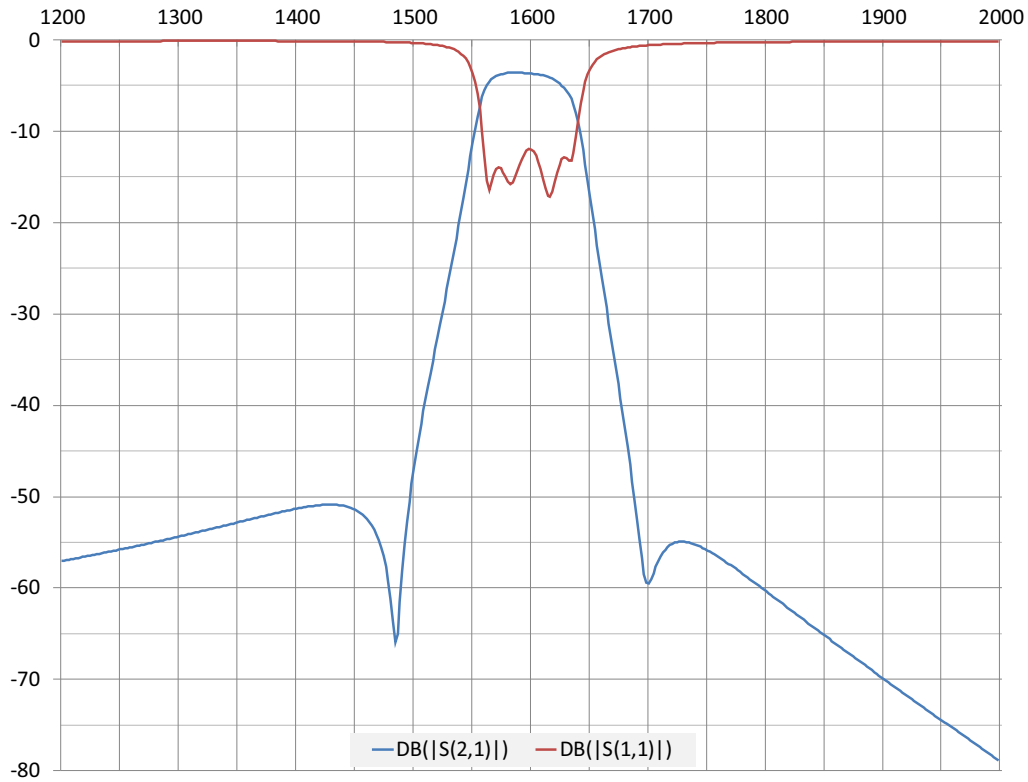
Parameter	Sym.	Min.	Typ.	Max.	Unit
Center frequency*	$f_c$		1600		MHz
Bandwidth @ -3 dB*	$\Delta f$		4 65		% MHz
Bandwidth @ -40 dB*	$\Delta f_r$		200		MHz
Insertion loss			3.5		dB
VSWR				2:1	
Power input	P			2	W
Wave impedance	Z		50		$\Omega$
*- parameter can be changed according to customer requirements					

### Temperature range

Parameter	Min.	Max.	Unit
Operation Temperature	-40	+85	°C
Storage Temperature	-65	+105	°C

**S – Parameters**

In-Band Response (1200 – 2000 MHz)



**Physical dimensions**

